



威海市环翠区

HUANCUI DISTRICT OF WEIHAI

招商推介手册

INVESTMENT PROMOTION MANUAL



CHINA WEIHAI
中国·威海



目录 >>> CONTENTS

01 环翠概况
Huancui Survey

05 环境优美
Beautiful Environment

11 综合保障
Comprehensive Support

25 产业基础
Industrial Base

03 城市名片
City Card

09 交通便利
Convenient Transportation

13 营商环境
Business environment

29 园区配套
Park Matching



01 HUANCUI PROFILE 环翠概况

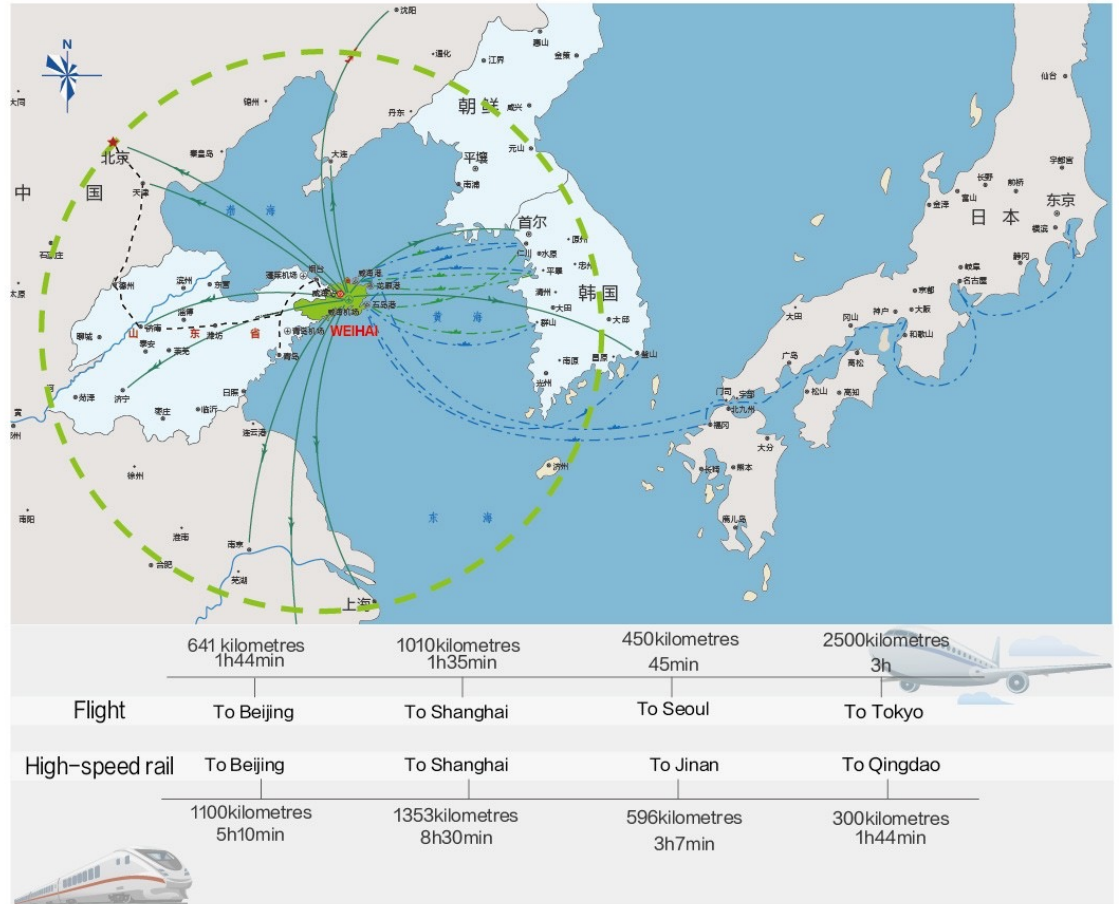
City profile >>>

Weihai City is located in the eastern end of Shandong Peninsula, the center of Bohai Rim Economic Circle and Northeast Asia Economic Circle, and the closest city between China and South Korea. The total land area is 5797 square kilometers, with a permanent population of 2.82 million and a coastline of 985.9 kilometers.



Location advantage >>>

Huancui District is the political, economic, scientific and cultural center of Weihai City. It is the seat of Weihai Municipal Committee and Municipal Government. It covers an area of 276 square kilometers and has a population of 366,000. As a central city, it has obvious geographical advantages and superior investment environment.



02

CITY
CARD

城市名片 >>>

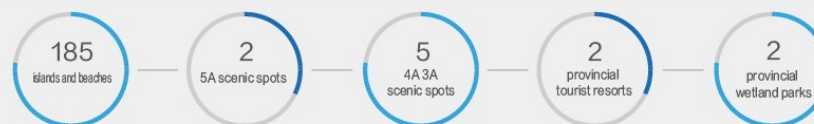
WEIHAI

- China's first "National Health City"
- China's first "national environmental protection model city"
- China's first "China Excellent Tourism City"
- The first "national garden city" in northern China
- China's first UN "Habitat Award" city
- China "National Forest City"
- China's "National Ecological Demonstration Zone"
- China "National Civilized City"
- "Zhonghua Baogang Environmental Award"
- Top 40 investment environment in China
- China's top 50 cities with comprehensive economic strength
- "The world's best example city for improving human habitation"
- China's first batch of "National Food Safety Demonstration City"

03 BEAUTIFUL ENVIRONMENT 环境优美

Beautiful scenery

There are 185 islands and beautiful beaches along the coast. There are many hot springs scattered around the coast. Mountains, seas, bays, beaches, islands and springs complement each other to form unique coastal scenery. At present, there are two national 5A scenic spots in Liugong Island and Huaxia City, five national 4A and 3A scenic spots, two provincial tourist resorts and two provincial wetland parks.





Pleasant climate >>>

It has a unique ecological environment advantage, located at 37.5 ° north latitude, the temperatures in summer are not extreme, the winters are not very cold, annual average temperature of 12 ° C, annual average precipitation of 800 mm, and 362 days of blue sky and white clouds in Weihai.



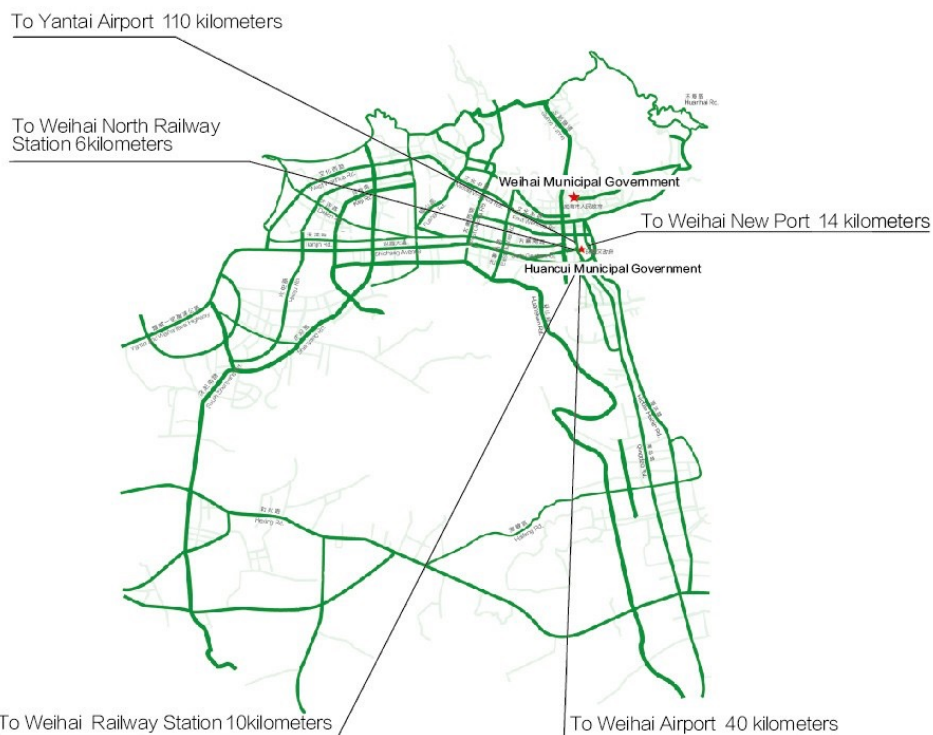
Humanistic simplicity >>>

In 2017, Weihai City realized the national civilized city "a whole area of red". Up to now, there are 80 moral models above the district level in Huancui District, including 2 national moral models and 3 moral models in the province. The selection of good people is normalized, 6 people are selected as "China Good People List" and 32 people are selected as "The Shandong Good People List", the survey of mass satisfaction is among the best in the province.



China Good People—Xing Weimin

04 CONVENIENT TRANSPORTATION 交通便利



2

expressways

21.7 kilometers

highway density

4

open ports

16

sea passengers and cargo routes

30

international and domestic routes

3

international airports

27

international and domestic routes

2.508 million

passengers

2

high-speed railway stations

50

daily flights

6.83 million

passengers

公路 / Highway

There are two expressways connecting Yanwei and Qingwei in the territory, and the density of trunk highways is 21.7 kilometers per 100 square kilometers;

海运 / Ocean Shipping

Weihai is the first pilot port of China-South Korea land and sea transportation business. There are 4 types of open ports in the country and surrounding countries, and 16 sea passengers and cargo routes to Korea, Japan and other countries have been opened, and 30 international and domestic routes have been opened.

机场 / Airport

There are three international airports in Weihai, Yantai and Qingdao in and around the territory. Weihai Airport has opened 27 international and domestic routes, and opened direct flights to Taipei. The passenger throughput of the airport reached 2.508 million passengers;

高铁 / High-speed rail

There are two high-speed railway stations in Weihai Station and Weihai North Station in the territory, with more than 50 daily flights. The passenger traffic of Qingrong Intercity Railway has reached 6.83 million passengers, realizing the half-day economic circle of Shandong Peninsula.



05 COMPREHENSIVE SUPPORT 综合保障

A comprehensive service system including cultural facilities, leisure facilities, medical facilities and educational facilities has been established.

Medical >>>

There are 10 tertiary and secondary hospitals;



Education >>>

It has 3 national "211 Projects" and "985 Projects" key universities such as Harbin Institute of Technology, Shandong University and Beijing Jiaotong University, and 8 higher vocational colleges. There are more than 100,000 college students and more than 240,000 talents;

Financial >>>

It has 115 financial institutions such as banks, insurance and securities; it has 4 headquarters banks and the first private bank in the province - Weihai Lanhai Bank;

Scientific research >>>

It has 130 innovation platforms at the municipal level and above, and has established scientific and technological and talents cooperation with more than 100 colleges and universities.

10 hospitals
3 key universities
8 higher vocational colleges
100,000 college students

240,000 talents
115 financial institutions
4 headquarters banks
130 innovation platforms

06 BUSINESS ENVIRONMENT

营商环境

Government service >>>

Specially set up Huancui District Administrative examination and approval Service Bureau to create the first "one window" comprehensive acceptance standardization construction pilot unit in the whole province, according to the principle of "doing well at one time", innovating the service mode and optimizing the service process.

④ "one-window" comprehensive acceptance

The five windows integrate 222 items from 22 departments and implement one-stop centralized processing to create a new model of "one window" standardization service

④ Construction projects joint trial and approval

One department "holds the group" 45 items "parallel approval" and implements "project agent" to provide accurate target services.

④ Exit and Entry permit

Build the most intelligent entry-exit certification hall in the province, 14 self-service equipments to build a one-stop self-service certification shortcut, to achieve nationwide operation. "Huancui Certification Model" is promoted as a model of the provincial public security entry and exit hall construction.



5 windows integrate 222 items from 22 departments
new model of "one window" standardization service

1 department "holds the group" 45 items "parallel approval"
"holds the group" "parallel approval" "project agent"

14 self-service equipments
one-stop self-service certification shortcut



first-hand house permit is available for 3 days

"one window joint office"



Waiting time 5 minutes

"one window joint office" comprehensive taxation modes



More than 30 outlets of four major banks

The government-bank docking

④ Real Estate Registration

The new model of "one window joint office" real estate registration service was initiated. For the first-hand house people only need to bring their materials go to the window once and three departments will handle it together, only 3 days could get the certificates, the efficiency of certification can be improved by 70%.

④ Tax service

The "five-one" and "one-window" comprehensive taxation modes of "one window, one person, one number, one machine, one system" were implemented, and the average waiting time was compressed to 5 minutes.

④ Market access registration

The government-bank docking will be carried out, and the registration service will be extended to more than 30 branches of four major banks (ICBC, CCB, ABC and CITIC Bank), which will facilitate the mass entrepreneurship and innovation.

Three connections and three services >>>

In order to optimize the service environment and speed up the transformation of development momentum, Huancui District has carried out "Three connections and three services" activities with the main content of connecting service enterprises, projects, and talents. The enterprise card, project card and talent card service system have been implemented, and the system of contacting enterprise (project) commissioner and "mobile government service station" have been innovatively established.



In 2018, it has helped enterprises, projects and talents to solve 1020 various types of problems, and 780 million yuan of free funds and 96.05 million yuan of support funds were obtained. In 2019, 12 combination policies were issued, including "Opinions on Implementing the "Talents gathering" Plan to Accelerate the Implementation of the New and Old Kinetic Energy Conversion", "Support Opinions on Accelerating the Development of Military-Civil Integration in Huancui District" and "Support Opinions on Promoting Scientific and Technological Innovation in Huancui District". Huancui District is becoming a stage for enterprises to expand, a good place for investment and entrepreneurship, and also a good place for talents gathering.

1020 780 million yuan 96.05 million yuan

Helping enterprises, projects and talents solve problems

Strive for free funds from superiors

Cashing in Support Funds

Talents gathering >>>

Ten Points of View on the New Deal for Talents



Industry Leading Talents Training Program >>>



Industrial Support Talents gathering Plan >>>

College Graduates Gathering Plan

	Doctor	Master	Top University's top Major Undergraduate	Undergraduate
Living allowance	5000yuan/month	2000yuan/month	1000yuan/month	1000yuan/month
Housing subsidy	1200yuan/month	800yuan/month	500yuan/month	—
House purchase subsidy	120000yuan	80000yuan	50000yuan	—

High Skilled Talents Multiplication Program

- For the introduction or evaluation of high-skilled talents such as the China Skills Award and the national technical expert, the company will be awarded 100,000 yuan; for the chief technician of Qilu, the company will be awarded 50,000 yuan.

- One more employee who has obtained the National Vocational Qualification Certificate of Senior Technicians, Technicians and Senior Workers the company will be awarded 2,000 yuan, 1,000 yuan and 500 yuan respectively.

Enterprise elite talent leadership plan >>>

Shortage of High-end Talents Support Program

Encourage enterprises to set up "high-paying and excellent posts", and employ high-level professional and technical talents and management talents with an annual salary of more than 300,000 yuan for full-time introduction, according to 20% of the annual salary, each person who introduces one person will be given a subsidy of up to 100,000 yuan. The cumulative maximum is no more than 500,000 yuan.

Entrepreneur Elite Pilot Program

Encourage entrepreneurs to participate in senior management training independently in well-known training institutions, and give up to 100,000 yuan of financial support according to 20% of the training cost. Enterprises are encouraged to undertake the activities of "Enterprise Corner". For those who invite experts to come to our district for centralized teaching, 50% of the teaching fee will be used to provide financial support of up to 50,000 yuan.



Mass Program for Professional Excellent Talents >>>

Selection and Training Plan for Scientific and Technological Talents

For the natural sciences, engineering and other fields, select a group of young scientific and technological talents, and award the honorary title of "Huancui Technology Talents" to give a government subsidy of 10,000 yuan per person per year. For the young experts who have made outstanding contributions to the selected provinces and the provincial youth science and technology awards, the company will be awarded 50,000 yuan.

Social Talents Selection and Development Program

Facing grassroots rural communities, social organizations, and cultural institutions, we selected a group of social talents and awarded the honorary title of "Huancui Society Talents", giving each person a government subsidy of 10,000 yuan per year.

Basic Education Talents Introduction Program

Implement the "Huancui Famous Teachers Studio" plan, giving each studio 30,000 yuan a year of financial support. The government allowance of up to 5,000 yuan per person per month is given to the well-known teachers and principals at or above the municipal level who are introduced full-time.

Medical and Health Talents Introduction Program

To implement the plan of "Huancui Key Specialties (Disciplines)", 30,000 yuan per year will be given to each key specialty (Disciplines). For key specialties (disciplines) at or above the municipal level, a maximum of 100,000 yuan of financial support shall be given. The government allowance of up to 5,000 yuan per person per month is granted to the shortage of professionals with intermediate and senior professional titles who have worked in tertiary hospitals for five years.

Service measures



Improve the "one-stop" service for talents. Create a "one-stop" service platform for high-level talents, which combines online and offline, issue "talent cards", open up green service channels, and provide full-chain services for talents, such as personnel agency, settled down, business registration, policy implementation.



Improve the diversified investment mechanism. Establish an innovation and entrepreneurship guidance fund, guide all types of investment funds to increase investment in talent projects, encourage financial institutions to innovate financial products such as "talent loans", and increase credit support for entrepreneurial talents.



We will improve the placement services for spouses and children. To coordinate and solve the employment problem of high-level talents' spouses, during the period of unemployment, the spouses will be given subsidy according to twice the minimum monthly wage, priority should be given to transferring the children of high-level talents to kindergartens and primary and secondary schools in the district.



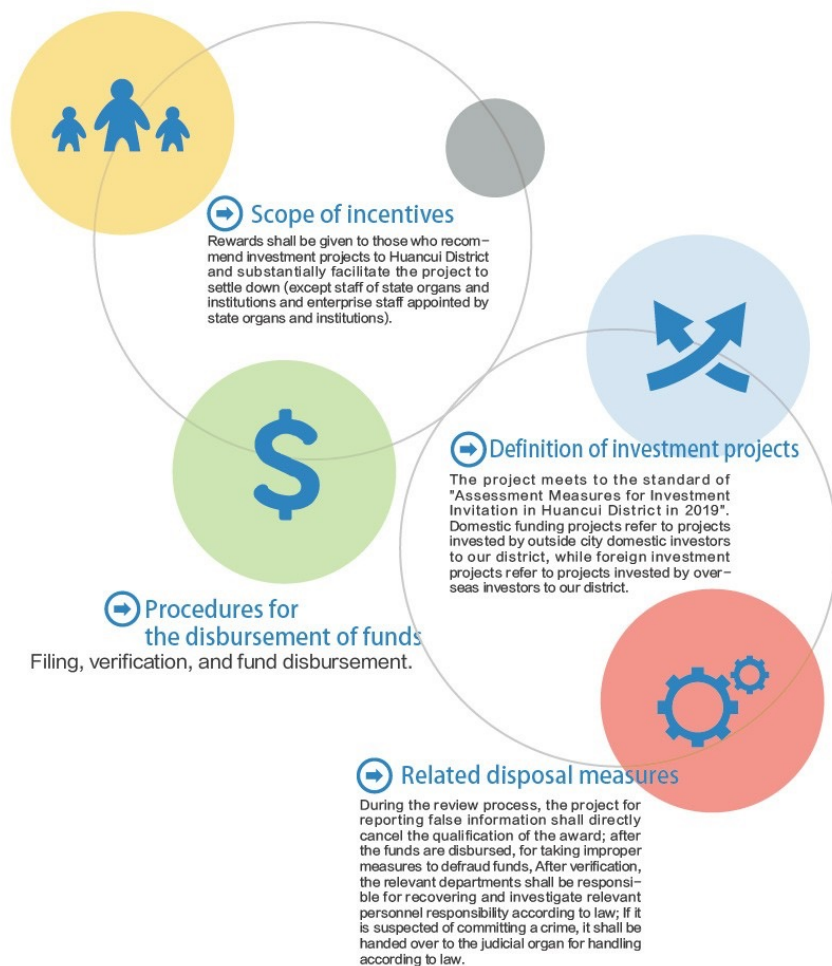
Promote the construction of talent housing projects. Speed up the construction of a number of well-equipped and well-matched talent apartments. All kinds of talents can live in talent apartments according to the corresponding standards or enjoy monetized housing subsidies.



Improve the political and social status of talents. We will implement the system of party committees' contact service experts, increase the proportion of high-level talents in the "two representatives and one committee" team, broaden the channels for talents to participate in politics, discuss ideas and suggestions, vigorously create a social atmosphere in which talents can be respected and used.

Investment attraction >>>

In order to fully mobilize the enthusiasm of all sectors of society to participate in the work of attracting investment, further enhance the level of opening up of Huancui District, the "Huancui District Investment Promotion Measures 2019" was formulated and promulgated.



➔ Reward criteria

Foreign investment project

New projects:	Old projects:	Large-scale projects
The cash and physical objects of the introduced projects in the year reached more than 500,000 US dollars (inclusive), and will be rewarded according to 6% of the amount of foreign investment received in the current year.	The cash and physical objects of the stock projects reach more than US\$1 million (including) and are rewarded according to 6% of the amount of foreign capital in the current year. Foreign-funded real estate projects shall be rewarded according to 3% of the amount of foreign capital in the current year.	In the current year, the cash and physical objects reached more than 10 million U.S. dollars (including), and the physical workload volume recognized by the municipal assessment reached 10 million yuan (including), which will be rewarded by an additional 6% according to the amount of physical workload formed.

Domestic projects

>>> Project identified by city-level annual assessment

The physical workload of tourism culture, health care for the aged, entertainment and leisure, commercial and trade development projects reached more than 30 million yuan in the current year, and that of manufacturing, agriculture, logistics and civil-military integration projects reached more than 10 million yuan (including), among which the manufacturing projects introduced in the form of light assets, such as agent buildings, revitalizing idle factories, etc. up to 5 million yuan (including) or more, modern service industry projects have reached 5 million yuan (including) or more, rewarded according to 6% years of physical workload.

>>> Projects introduced in the year that were not recognized by the municipal annual assessment

For manufacturing and financial insurance projects, district-level local tax revenues will reach 500,000 yuan, and each project will award 30,000 yuan; tourism culture, entertainment and leisure, business development, and logistics projects will reach 300,000 yuan, and each project will reward 20,000 yuan; Modern service industry projects such as e-commerce, software development, research institutes, and incubation centers have reached 150,000 yuan, and each project has awarded 10,000 yuan. For tax items that meet the above standards, each district-level local tax revenue exceeds 50,000 yuan and another 5,000 yuan is rewarded.

Top 500 projects

Projects that are invested by enterprises of the world's top 500 (the list published by Fortune magazine in the past year is the criterion) with a share-holding ratio of more than 30%, and those invested by the top 500 of China (the list published by the Chinese Enterprise Federation and the Chinese Entrepreneur Association in the previous year is the criterion, including subsidiaries with a share-holding ratio of more than 50%) shall be executed twice as the reward standard.

Headquarters Economy >>>

In order to speed up the development of the headquarters economy, promote the transformation of new and old kinetic energy, promote industrial transformation and upgrading, improve the city's service level, enhance regional competitiveness, and formulate the "Opinions on Supporting the Economic Development of the Headquarters in Huancui District".

1 Scope of support

It is a headquarters enterprise that has the qualification of independent legal person in line with the industrial development direction of Huancui District and is recognized as paying corporate income tax in our district. Engaged in commercial real estate and residential development and engineering construction enterprises are not included in the scope of support.



1 Support Policies



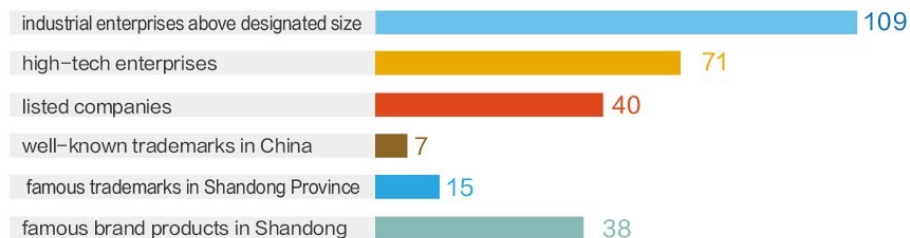
07 INDUSTRIAL BASE 产业基础 >>>

Huancui District has a good foundation for industrial economic development, forming a good development pattern of industrial transformation and upgrading, service industry quality and efficiency improvement, and characteristics of agricultural efficiency. It has introduced well-known domestic and foreign enterprises such as China Resources, Wanda, Evergrande, Poly, CECEP, Weiqiao and Fosun, and has established long-term economic and trade cooperation with more than 50 countries and regions.



Industrial transformation and upgrading >>>

Huancui has built a "5+2" industrial structure such as high-end equipment manufacturing, energy conservation and environmental protection, biomedicine and new materials, vigorously promotes intelligent manufacturing, promotes "enterprise on the cloud", deepens the integration of military and civilian, and strengthens quality construction. There are 109 industrial enterprises above designated size such as Weihai Guangtai and Weigao Orthopaedics, 71 high-tech enterprises, 40 listed companies, 7 well-known trademarks in China, 15 famous trademarks in Shandong Province and 38 famous brand products in Shandong.



Guangtai Special Vehicle



Weigao Orthopaedics Department



New Beiyang Digital Technology



Haixin New Materials

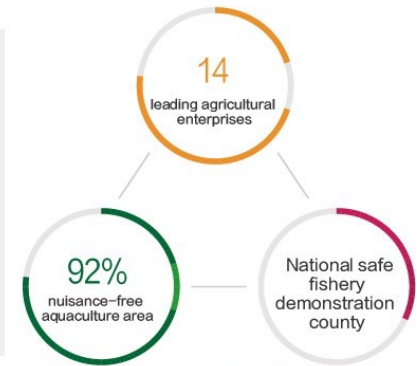
Service industry quality improvement >>>

Modern service industry is guided by modern finance and commercial industry, supported by tourism, cultural creativity and healthy old-age industry, and strives to build a "2 + 3" modern service industry system. Huaxia Wenlv was named as "National Cultural Industry Demonstration Base"; it was approved as a national e-commerce demonstration base; 12 innovative and entrepreneurial incubators were established, with an incubation area of over 250,000 square meters.



Characteristics of Agricultural Efficiency >>>

Modern agriculture highlights high quality, high efficiency, ecology and scale, speeds up the transfer and extension of one production to three production. It has 14 leading agricultural enterprises at or above the municipal level, such as Yuwang and Puyuan. The aquatic products nuisance-free aquaculture area has reached 92%. It has been appraised as a national safe fishery demonstration county and a "Shandong Leisure Agriculture and Rural Tourism Demonstration County".



Yuwang Group



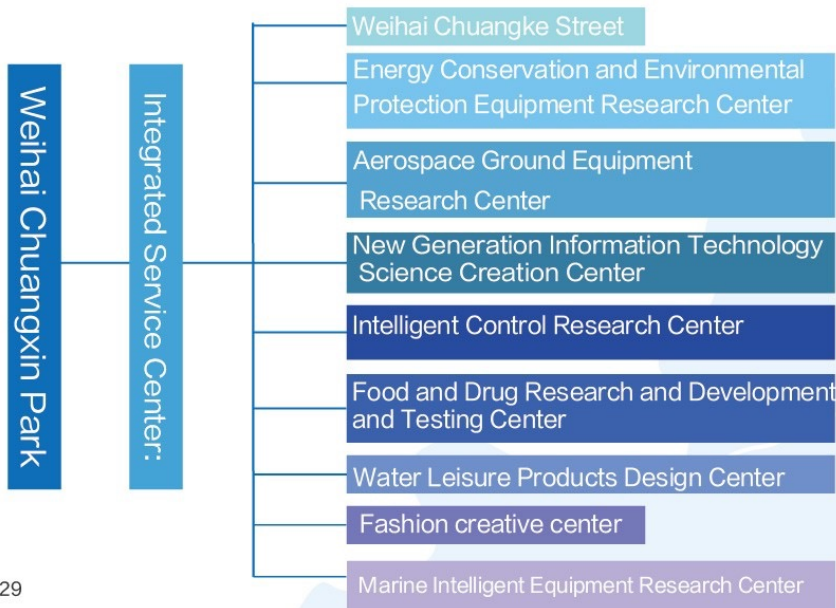
Puyuan Food



08 PARK MATCHING 园区配套

Weihai Chuangxin Park >>>

Weihai Huancui District takes its own advantages, integrates domestic and foreign high-quality resources and professional service teams, takes "Four New Technologies" (New Technologies, New Industries, New Business Forms, New Model) as the core, takes buildings as the carrier, takes specialization as the direction, and producer science and technology services as the focus, vigorously invites investment, talents and institutes, so as to build a new engine of regional economic and social development—Weihai Chuangxin Park. Chuangxin Park has built a comprehensive service center and nine major professional sub-centers.



The comprehensive service center is located in the center of the city ,at No.59 wenhua zhong Road, 2.7 km from the municipal government, 6 km from Weihai North Station, 10 km from Weihai Station, 40 km from Weihai Airport, 110 km from Yantai Airport, about 3 km from Shandong University (Weihai) Branch and Harbin Institute of Technology (Weihai) Branch.



Sub-center introduction



Weihai Chuangke Street

The center is located at No. 38 Wenhua dong Road, Jingyuan Street. The total area of the block is 11,000m². It is operated by Beijing Shuangchuang Street Investment Management Co., Ltd., a subsidiary of Qinghua University. It has already registered Weihai Chuangke Street Incubator Co., Ltd. adheres to the concept of "from Qinghua, innovation and entrepreneurship", and is guided by the needs of innovation and entrepreneurship. It actively introduces many innovative and entrepreneurial service cooperation institutions, gathering the advantages of Qinghua Shuangchuang Resources and Weihai Industry in the form of blocks, and build a series of perfect innovation and entrepreneurship ecosystems such as entrepreneurial innovation, technological innovation, entrepreneurial services and investment financing.



Energy Conservation and Environmental Protection Equipment Research Center

The center is located at No. 186, Hexing Road, Yangting Town, with a total construction area of 12,000 m², sponsored by Weihai LanBo Technology Incubator Co., Ltd. At present, the center has formed the "environmental comprehensive management industrial ecological chain" represented by Shifang Luzhou, the "new energy automobile industry ecological chain" represented by hydroquinone power, and the "LED lighting industry ecological chain" represented by Longxi energy saving, three major industrial ecological chains.



Aerospace Ground Equipment Research Center

Located at No. 48 Lushan Road, Zhangcun Town, with a total floor area of 2,000 m², the center is led by Weihai Yihe Special Equipment Manufacturing Co., Ltd. It mainly focuses on aerospace ground vehicles, ground equipment new materials, information technology and other fields, integrates the specialist resources and R&D capabilities of the Fourth Aerospace Institute, Harbin Institute of Technology (Weihai) and other institutions of higher learning, and creates a high-level military-civilian integration technology achievements transformation center.



New Generation Information Technology Science Creation Center

Located at 106 Huanshan Road, Songshan Street, with a total floor area of 25,000 m², the center is led by Yinkaite incubator in Weihai. It is dedicated to developing key technologies such as Internet of Things, Cloud Computing, Big Data and Artificial Intelligence with independent intellectual property rights, promoting the wide application of new generation information technology, and providing public services to Intelligent City consultation in social services.



Intelligent Control Research Center

The center is located at 160 Hexing Road, Yangting Town, with a total building area of 10,000 m². With the technical support of the Automation Institute of CAS, Shandong University, Harbin Institute of Technology (Shenzhen) and other institutes of higher learning, it face to the fields of marine science and technology, intelligent city, natural and environmental ecological maintenance and restoration, digital printing equipment, etc. to build an intelligent control industrial cluster with software and hardware, pilot-scale and close production.



Food and Drug Research and Development and Testing Center

The center is located at No. 99 Shuangcheng Road, Yangting Town, with a total construction area of 20,000 m². It is supported by Shandong Pharmaceutical and Food Vocational College as a research and development, and it relies on Shandong Science and Technology Research and Development, Testing and Sharing Laboratory to attract biomedicine, health food and cosmetics research and development, to build a national food and drug related industry R&D center.



Water Leisure Products Design Center

The center is located at No. 555, Shenyang zhong Road, Zhangcun Town, with a total construction area of 16,000 m². It is hosted by Weihai Datian Industrial Equipment Co., Ltd., and is mainly engaged in the development of yachts and fishing gear. It cooperates with many research institutes such as Shanghai Ship Technology Research Institute and Shandong Jiaotong University. And employ state-level technical consultants to adopt the "central operation company + innovation industry alliance" model, and strive to lead the world's latest design of water equipment design.



Fashion creative center

Located at No. 170 Huanhai Road, with a total construction area of 18,000 m², the center is sponsored by Weihai Fashion Beihai Commercial Management Co., Ltd. relying on the technical support of Tianjin Polytechnic University and Shandong university of art and design, adheres to the orientation of "originality, brand and high-end", focuses on introducing projects such as fashion product design and development, original brand innovation and entrepreneurship, and strive to make the center a new highland for the development of fashion and creative industries across the province and the country.



Marine Intelligent Equipment Research Center

The center is located at No. 298 Huanhai Road, Sunjiatun Street, with a construction area of 8,700 square meters. According to the standards of the national "985" type I scientific research institutes, it is jointly built by Huancui District and Harbin Institute of Technology (Weihai). Weihai Lanwan Marine Engineering Equipment Research Institute Co., Ltd. is responsible for the operation, focusing on high-end marine equipment, marine communication technology and other research and development and industrialization. It has been stationed in Tianhang Information Technology, Huahao Haitong Communications and other enterprises.

Weihai International New Material Industrial Park

Weihai International New Material Industrial Park provides a high-quality carrier platform for the high-end industrial projects such as new materials, new medicines and new energy in Huancui District. The planned area of the park is 55 square kilometers, and the "six horizontal and nine vertical" mesh road network is built. The various pipelines such as water supply and drainage, rainwater and heat supply are complete, and the infrastructures such as water, electricity, communication and warming are perfect. Education, health care, culture and other supporting facilities are perfect, and creates the industrial layout of "south industry, North residence and middle service", in 2019, it was successfully selected as a China-German Ecological Demonstration City.

The northern commercial residential service area

It invested 1.3 billion yuan to build three service systems: Aishan School, 101 Mu Public Cultural Service Center and 95 Mu Likoushan Hospital. The Jiajiayue Commercial Complex project with a total investment of 300 million yuan will be introduced to provide to investors, mobile talents and migrant workers a livable, suitable and suitable environment.



The service industry zone along the river

Invested 320 million yuan to build a provincial-level wetland park with a total area of 85 hectares. Using more than 1200 mu surrounding land along Yangting River, we have introduced scientific research platforms such as Huasu Medical Science and Technology, Science and Health Inspection, International New Materials Innovation Center, etc. to build service industry gathering areas such as science and technology research and innovation centers, and to provide support for the development of new materials industry in the park.

The Southern science and technology industry project area

Focus on energy-saving and environmental protection materials, biomedical materials, membrane materials, aluminum foil materials and other fields, to create an international park for the new material industry. At present, four production and application industries of polymer materials, non-ferrous materials, high-performance carbon fiber composite materials and biomedical materials have been initially formed. A total of 54 high-end industrial projects with over 100 million investment have been invested, with a total investment of more than 36 billion yuan.



Energy Conservation and Environmental Protection Industrial Park

Building an energy-saving and environmental protection industrial park covering an area of more than 500 acres. We have introduced projects such as China Energy Conservation and Environmental Protection New Materials Industrial Park, High-end Equipment New Material Industrial Park, Zhongou Water Treatment and Membrane Technology Innovation Industrial Park. It will become a comprehensive high-end park integrating product research and development, pilot production and supporting services, and seize the commanding heights of the future new materials industry.

China Energy Conservation and Environmental Protection New Materials Industrial Park

Total investment

3 billion yuan

Land occupation

262Mu



High-end Equipment New Material Industrial Park

Total investment

10 billion yuan

Land occupation

145Mu



Zhongou Water Treatment and Membrane Technology Innovation Industrial Park

Total investment

5 billion yuan

Land occupation

100Mu



Aerospace Industry Park

Create an aerospace industry park with a planned area of 200 acres. It has deep cooperation with Qiling Capital, the Institute of Remote Sensing of the Chinese Academy of Sciences, and the Aerospace Fifth Academy. It is mainly engaged in aerospace material manufacturing, remote sensing applications, communication equipment and related operational services. It will promote the development of the aerospace industry chain with billions of output value.

